



MARCHÉ

ST. CHARLES

MARKET

Be Part Of The Transformation.

TOWNHOUSE

TH2

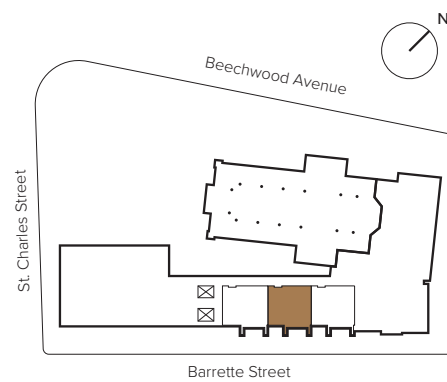
SOUTH VIEWS

3 BEDROOMS + DEN / 2.5 BATHS

1,778 SQ.FT. INDOOR
153 SQ.FT. OUTDOOR

THIS PLAN IS ALSO AVAILABLE FOR UNIT: TH3

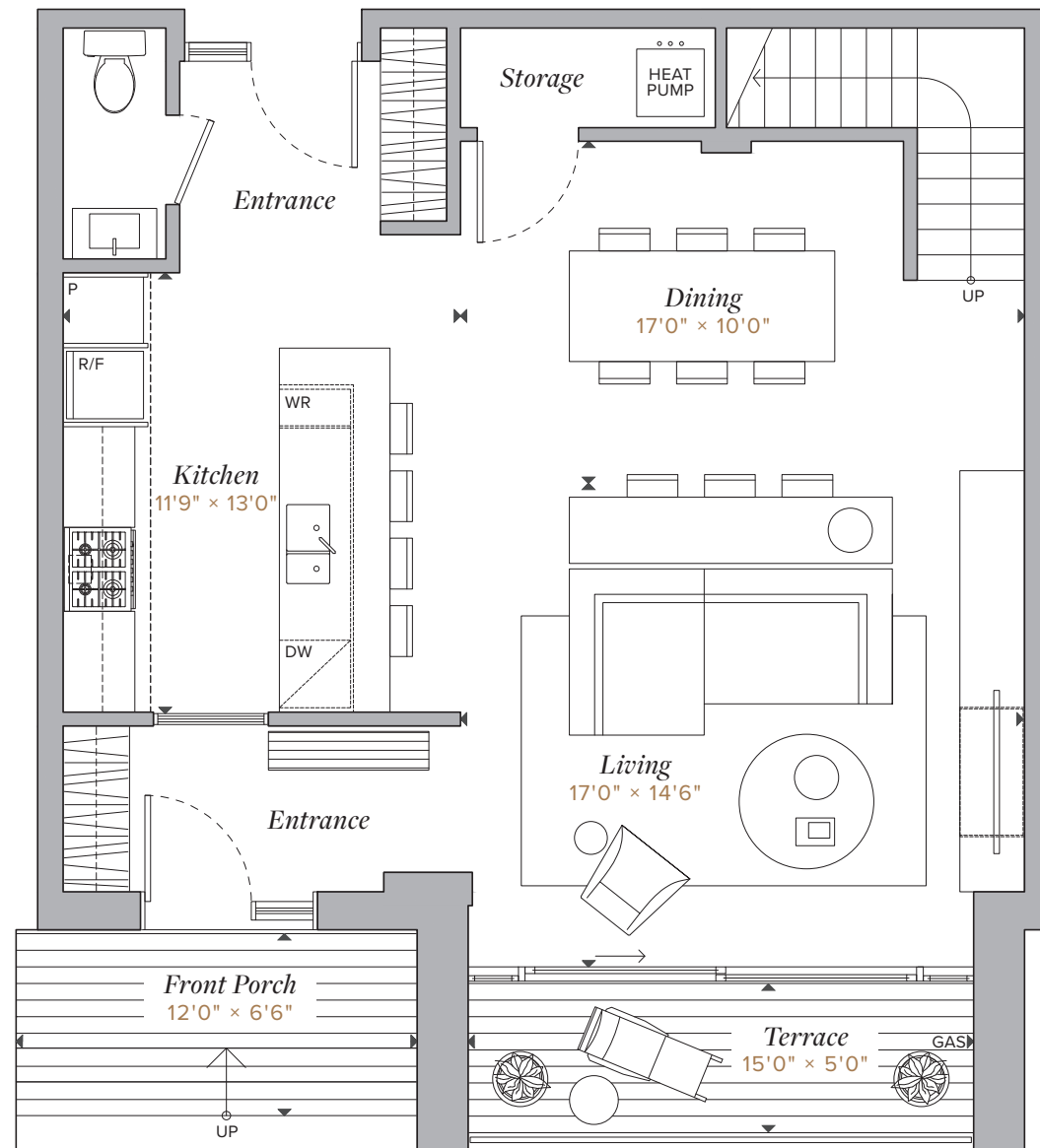
- 13' Ceiling in Dining and Living
- Front Porch
- Second Floor Laundry
- Master Bedroom with Ensuite
- Double Sink Ensuite
- Balcony
- Den



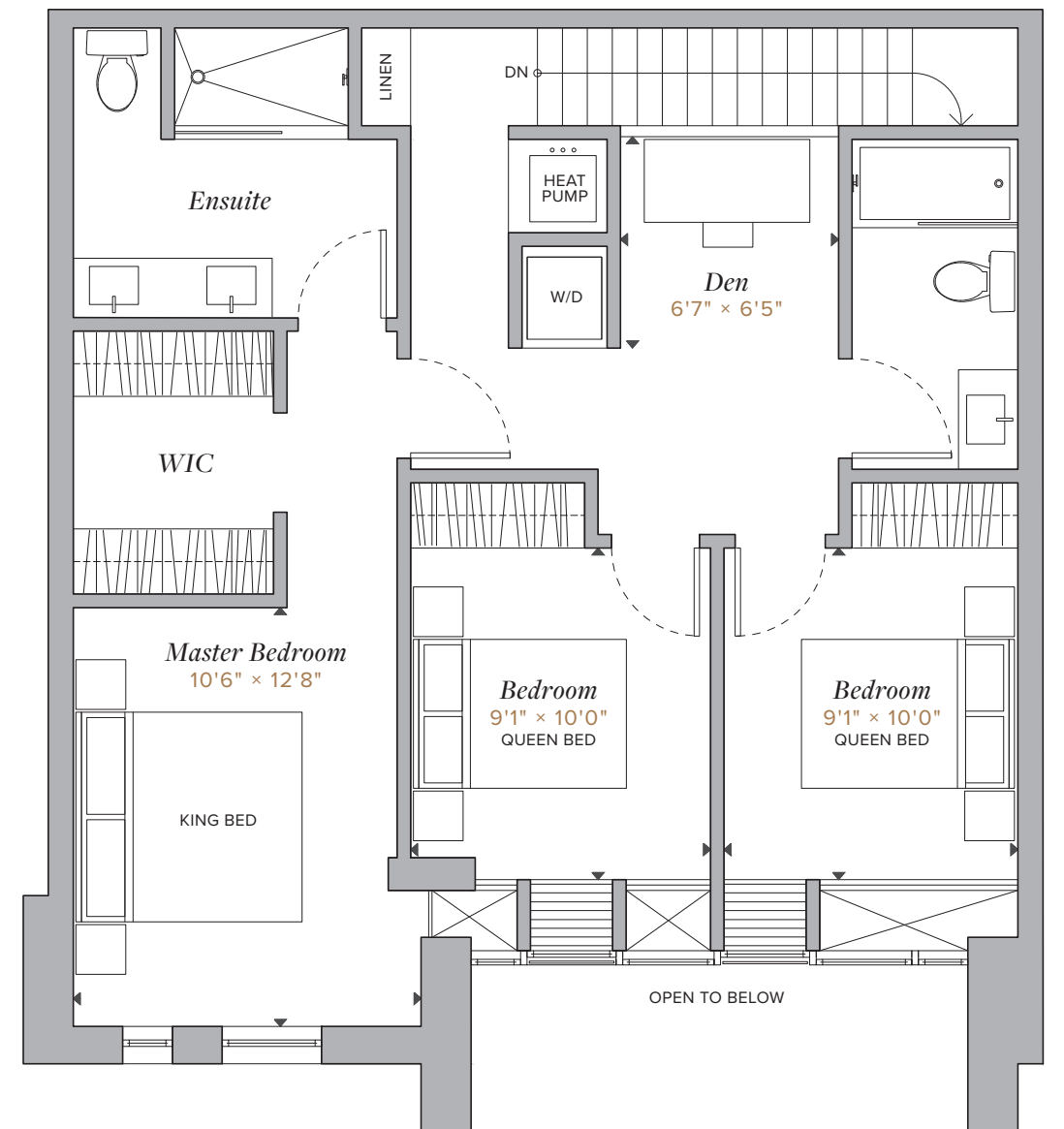
MODBOX

STCHARLESMARKET.CA
613.301.7782

All prices, figures, sizes, specifications and information are subject to change without notice. E.&O.E. All areas and stated dimensions are approximate. Actual usable floor space, living area and square footage may vary from stated floor area. Terrace sizes and locations, if any, vary per floor. Furniture is not included. All illustrations are artist's concept only.



Ground Floor



Level 2